



System



Yawalbond System



Yawalbond

YAWAL System



System description

The new YAWALBOND system of composite panels is a perfect building material used for external and internal wall facing, elevation layers, fills of light frame structure curtain walls in state-of-the-art modernised and renovated buildings. Layer plate facings are made from two 0.50 mm aluminium sheets filled with polyethylene core. The composite structure of plates ensures particularly favourable proportion of their resistance to the weight of the plates. This enables easy transportation from the distributor to the construction site. YAWALBOND aluminium composite panels, very easy to keep clean, are the most practical and economical way to possess a perfect elevation. Thanks to the use of high quality materials and PVDF varnish layers, we give a 20 years' guarantee on our product.

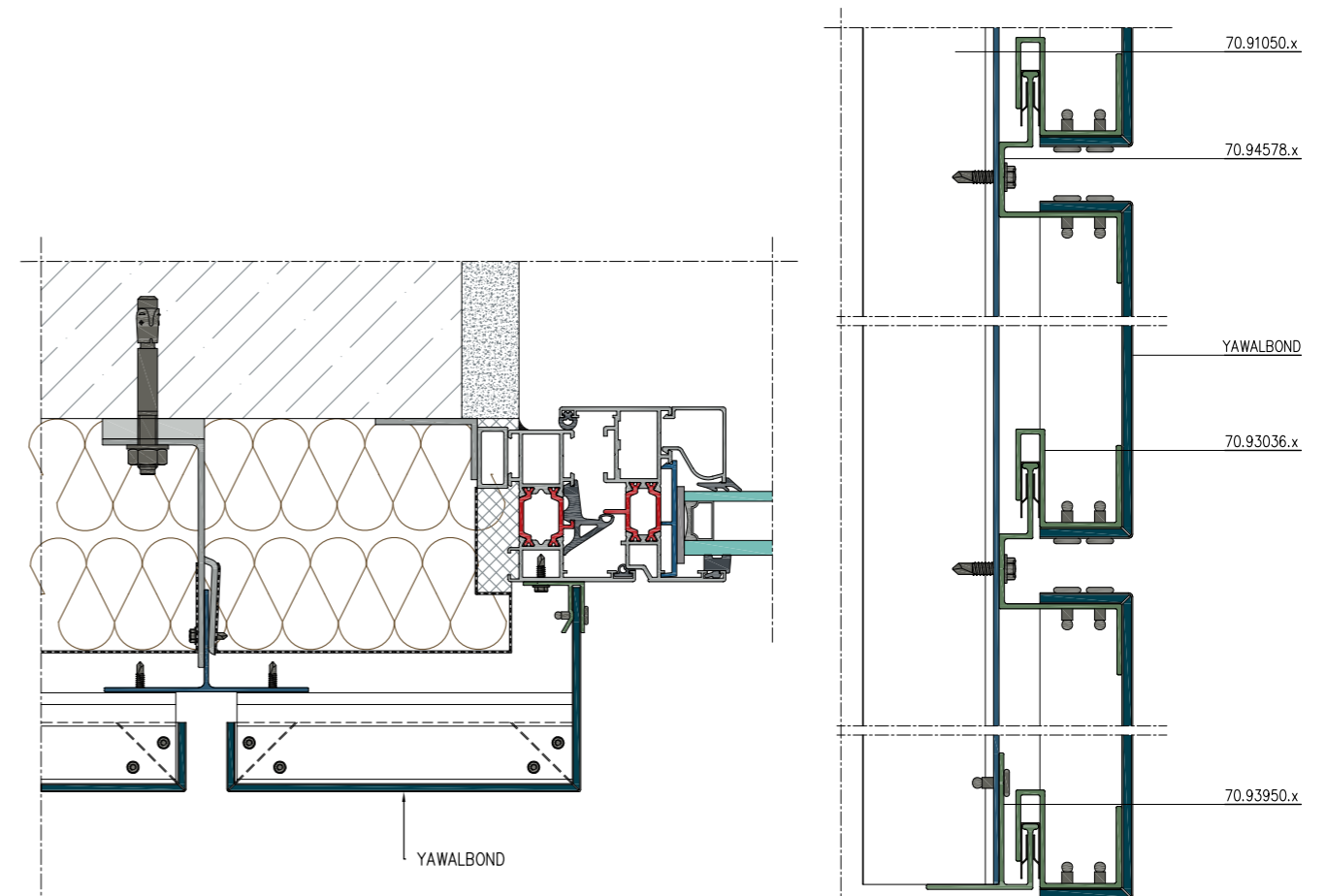
Yawalbond
YAWAL System



Merits of the system

- YAWALBOND plates are available in several colours varnished with a PVDF layer, which ensures resistance to weather conditions at considerable temperature differences (from -50° to +80°),
- composite material retains its stiffness even under hard conditions,
- resistance to impact, tension, squashing,
- highly sound-proof curtain walls of composite plates thanks to very good acoustic properties,
- YAWALBONDS may be machined in the processes of cutting, milling, bending, pressing, drilling, rolling and gouging,
- resistance to sun rays and chemical agents,
- including no hazardous substances, they are environmentally safe.

The system solutions and applications



A detailed connection of Yawalbond elevation with window frame woodwork.

Yawalbond type elevation vertical section.

Technical characteristics

Composite panels dimensions	
thickness	4 mm
width	1250 mm, 1500 mm
standard maximum length	3200 mm / 4000 mm
weight	5,8 Kg/m ²

Aluminium mechanical properties	Yawalbond
resistance to stretching (Rm)	min 170 MPa - max 210 MPa
plasticity limit	min 150 MPa
minimum lengthening % (A 50 mm)	2
bending radius 180° - 90°	2,5t - 1,5t
hardness HBW	54



Yawal S.A.

ul. Lubliniecka 36, 42-284 Herby,

tel.: +48 34 352 88 00,

fax: +48 34 357 41 42,

e-mail: yawal@yawal.com

www.yawal.com